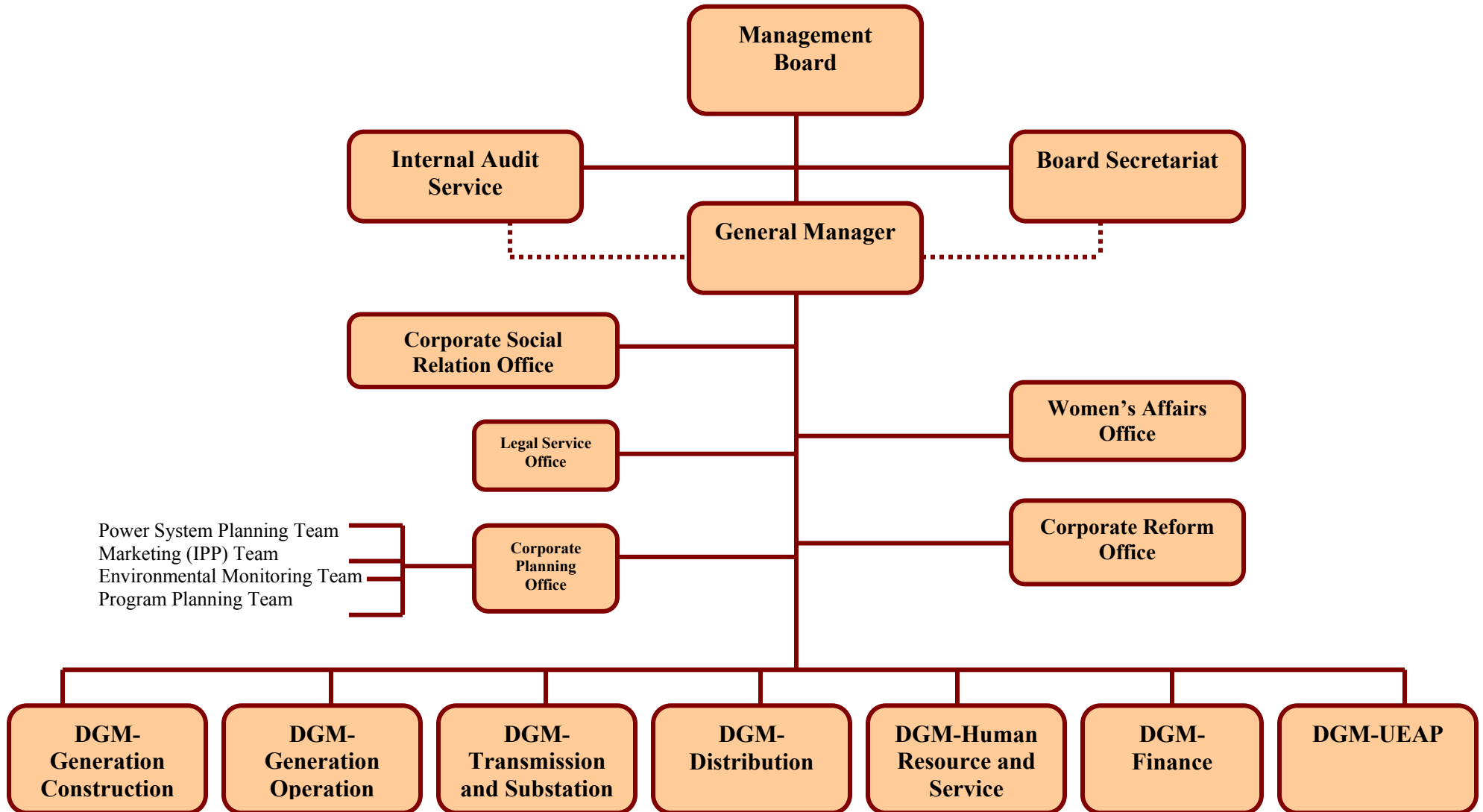
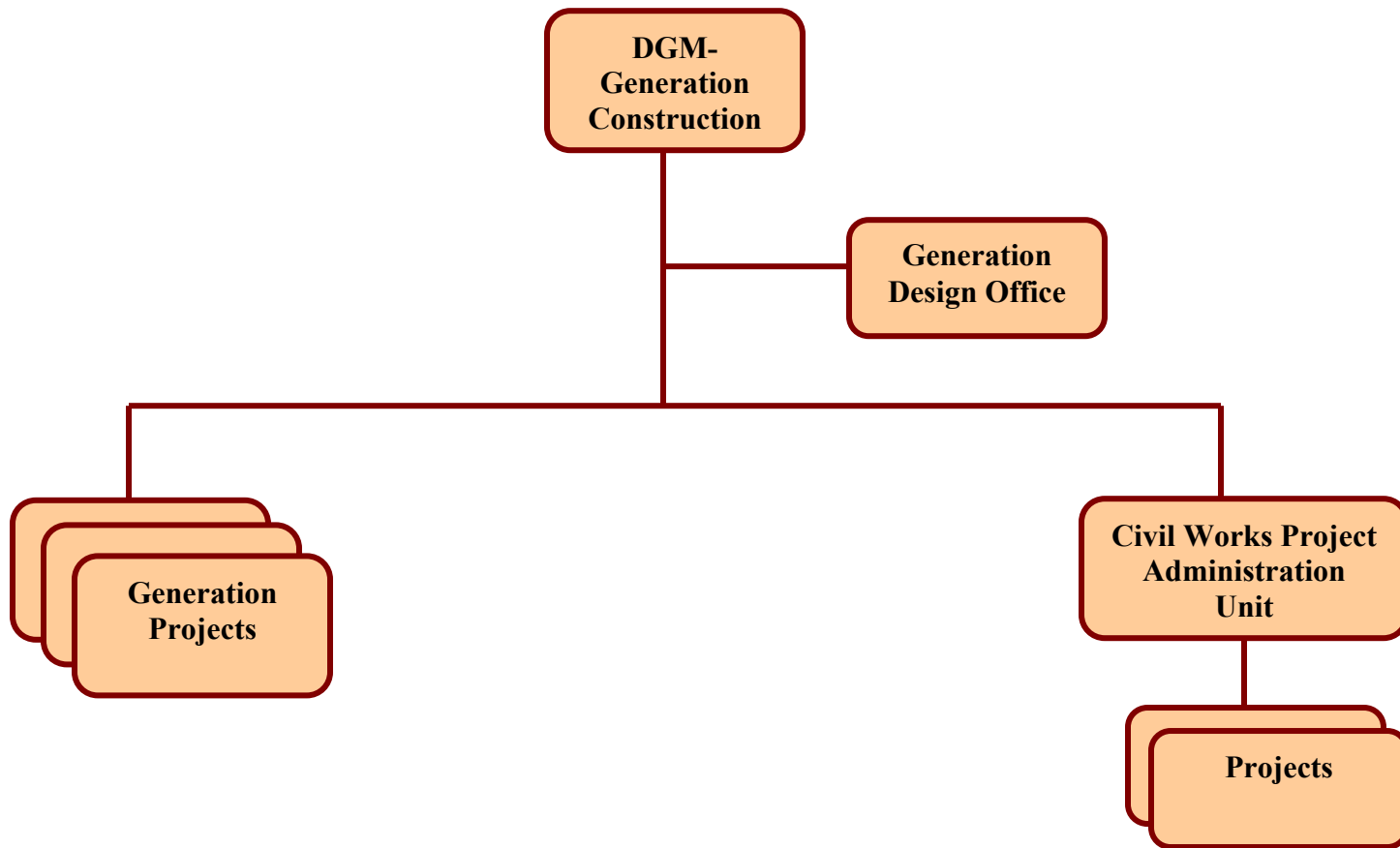
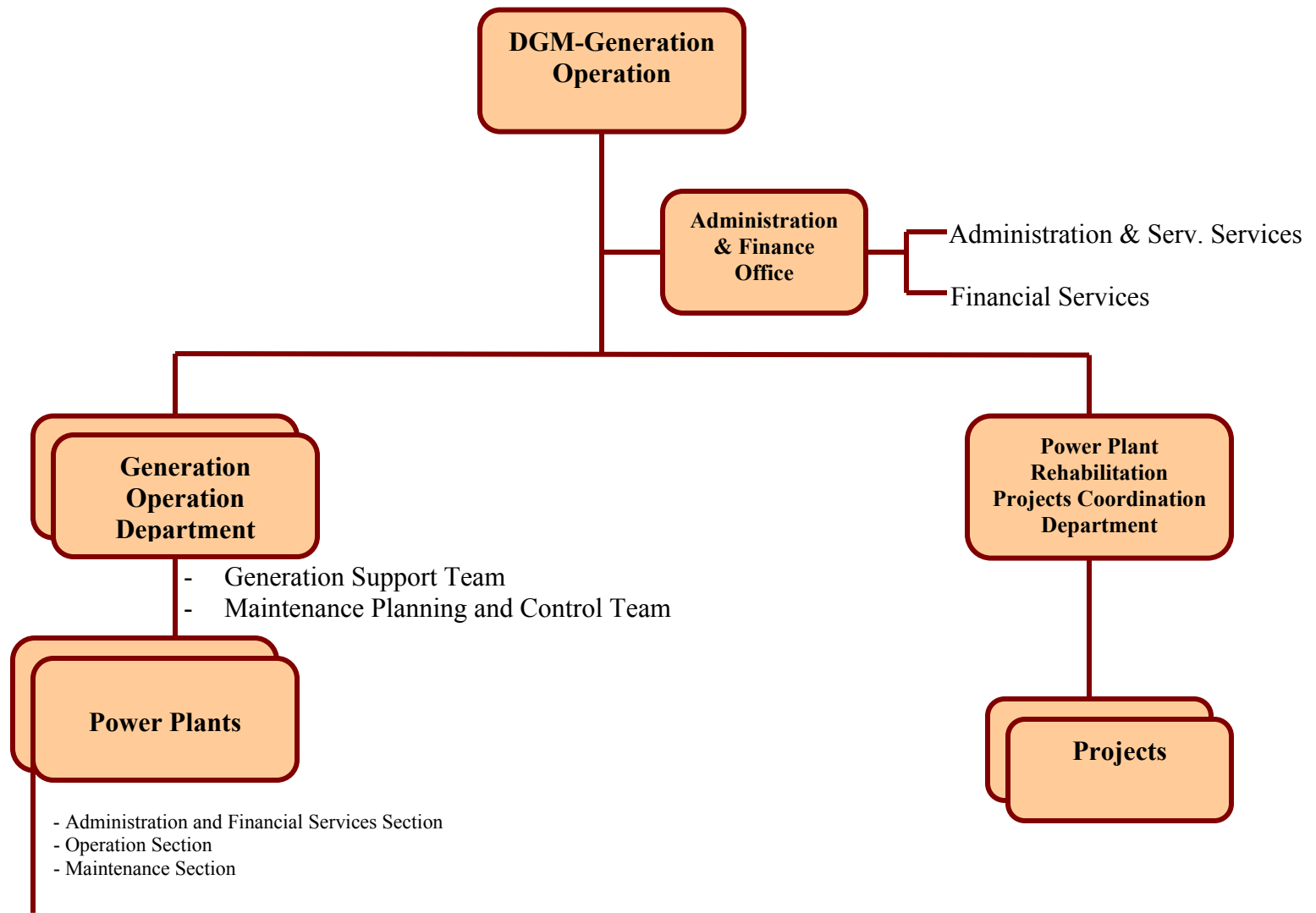
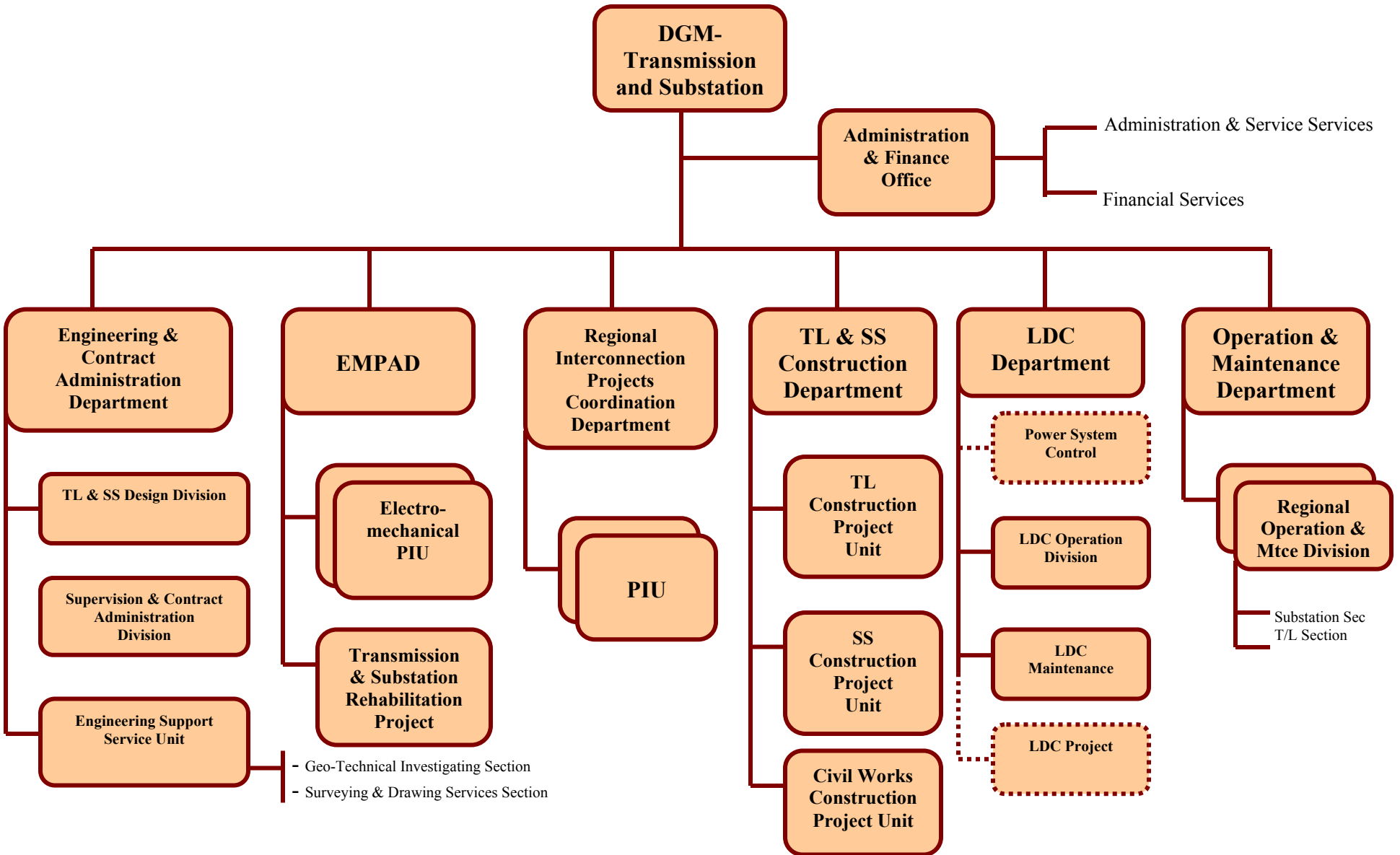


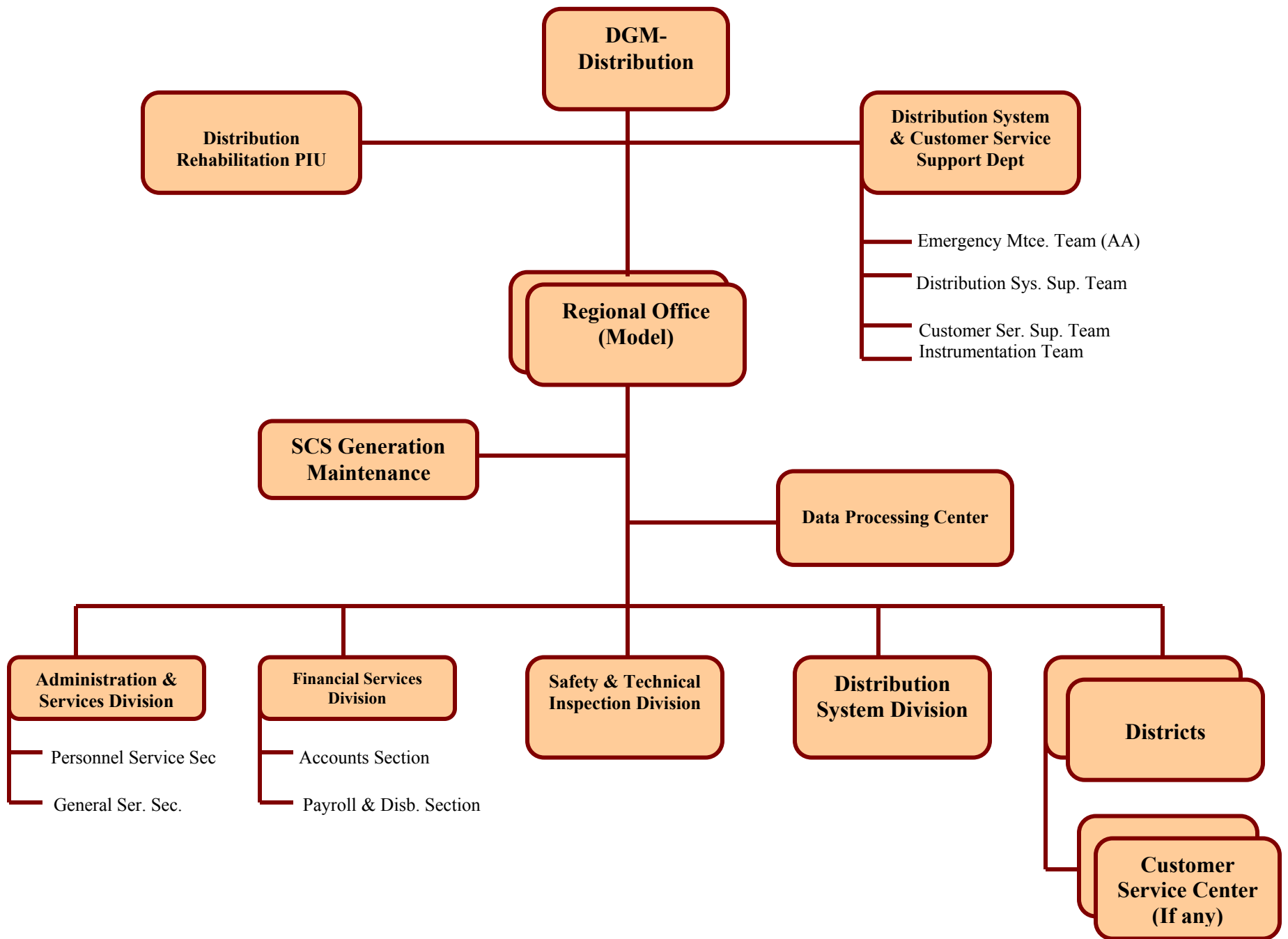
## The Detail Structure of EEPCo



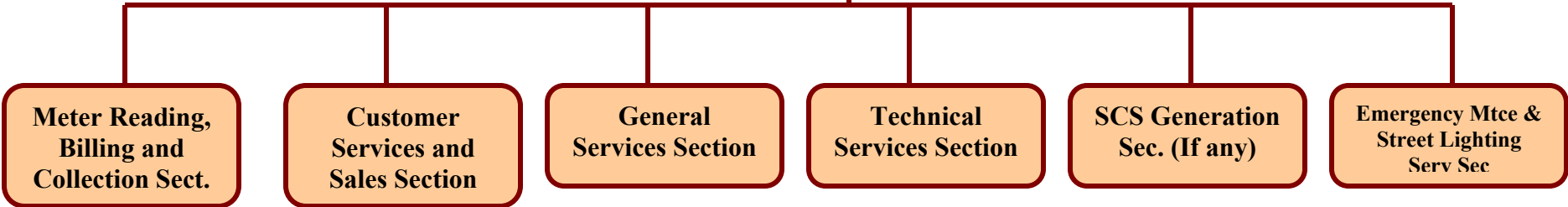








**District  
Model 3, 4, 5**



**DGM-Human Resource & Services**

**Club and Sports Service**

- Sport Administration
- Club Administration

**Human Resource Planning & Organization Department**

Human Resource Planning & Dev't Division

Organization & Systems Development Division

Manpower Training Division

- General Training Sec
- Technical Training Sec

**Personnel & Benefit Administration Department**

Personnel Administration Division

Health Service Division

Insurance and Benefit Division

**Materials & Logistics Management Department**

Domestic Purchasing Division

Foreign Purchasing Division

General Services Division

Material Management Division

**Information & Communication Technology Department**

Application and System Administration Division

Hardware and Networking Support Service Division

**College of Electrical Power Engineering & Utility Management**

Administration and Finance Services

**Auxiliary Services Department**

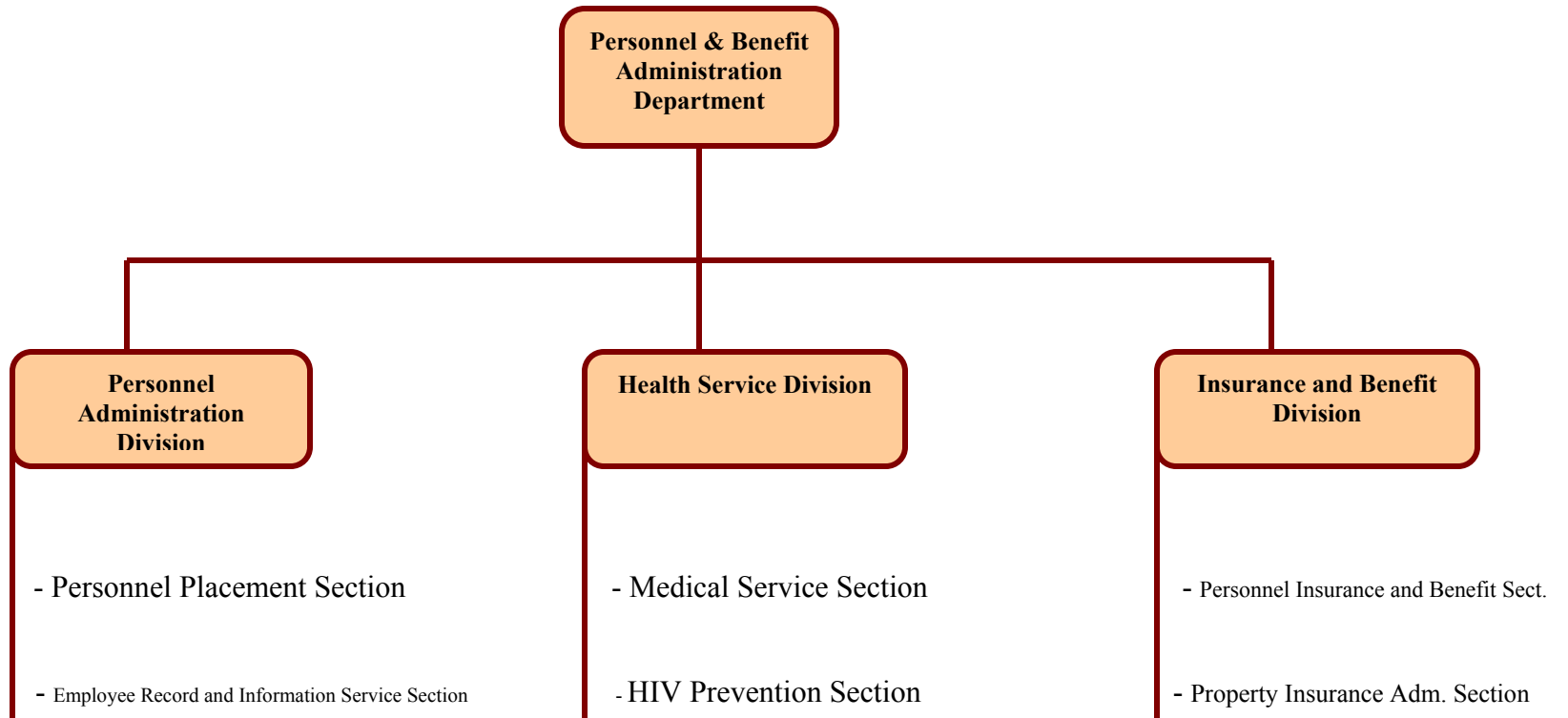
Electrical Workshop Division

Mechanical Workshop Division

Vehicle Maintenance Division

Wood Pole Production Division

SCS Generation Construction PIU



NB  
Both GPA & Benefit Administration operation jobs shall be decentralized to respective Administration offices.

